

COMPANY BOLLARD UP&DOWN BULKHEAD FLOODLIGHT IN-GROUND BRICKLIGHT GARDEN URBAN CLASSIC URBAN MODERN HIGH-BAY POST LAMPS REFERENCES

NOEMI E27

LARGE SIZE



E27 hexagonal lantern in classic style, made of shockproof resin material, UV-rays stabilized, rust and corrosion-free. Modular construction suitable for post top, hanging and wall installation. Provided with high temperature resistant ceiling suitable for ballast fixation. Insulation class II, protection rating IP 55.

Lanterna esagonale E27 in stile classico, realizzata in resina antiurto, stabilizzata ai raggi UV, inattaccabile da ruggine e corrosione. Idonea per il montaggio a palo, a sospensione o a parete. Fornita con soffitto ad alta resistenza al calore idoneo per il fissaggio dei reattori. Classe di isolamento II, grado di protezione IP55.

E27 FILAMENT LED

INDOOR & OUTDOOR USE

+80°C
-30°C

90% HUMIDITY

VOLTAGE SURGE RESISTANT

DRIVER SILICONE PROTECTION



E35.000.N1R

RECYCLABLE	ANTI-SHOCK	TEMPERATURE	WALL	POST
				HANGING





NOEMI E27 - LANTERN COMPONENTS

IP55



Decorative **PINNACLE** to be mounted on the roof top for post installation or on the lantern base for hanging installation.

***PINNACOLO** decorativo applicabile alla sommità del tetto (montaggio a palo) o sulla base della gabbia (montaggio a sospensione).*

Lantern **ROOF** made of shockproof resin material. Tool-free opening for relamping and maintenance.

***TETTO** realizzato in resina antiurto. Rimovibile senza l'ausilio di attrezzi per manutenzione e cambio lampadina.*

High temperature resistant reflective **CEILING** made of shockproof resin material. Provided with E27 lampholder and suitable for ballast fixation.

***SOFFITTO** riflettente realizzato in resina antiurto ad alta resistenza al calore. Fornito completo di portalampada E27 e idoneo per il fissaggio dei reattori.*

DIFFUSER of UV-rays stabilized PMMA, with recess for a power supply cable. One piece only closed at the base to ensure high protection against external agents.

***DIFFUSORE** in PMMA resistente ai raggi UV, provvisto di sede per l'alloggiamento del cavo di alimentazione. Realizzato in unico pezzo chiuso alla base per garantire un alto livello di protezione contro gli agenti esterni.*

CAGE made of shockproof resin material, UV-rays stabilized, rust and corrosion-free.

***GABBIA** realizzata in resina antiurto, stabilizzata ai raggi UV, inattaccabile da ruggine e corrosione.*

NOEMI E27

E35.000 *



Dimensions and weight

Height: 530 mm
Width: 350 mm
Depth: 305 mm
Weight: 3,2 Kg
Junction to support: diameter 60 mm
Area exposed to wind pressure:
CxS = m² 0,110

Moulded colours:

Black White

Painted colours:

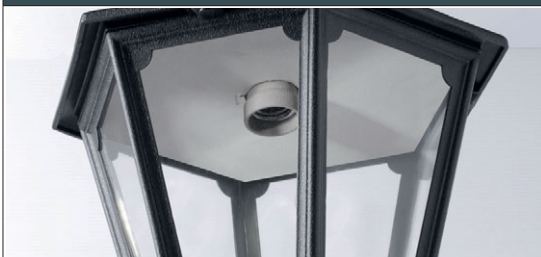
Antique green Antique bronze

Diffuser PMMA:

Clear Opal

E27

*ADD. SUFFIX



E27 lantern supplied as an option with TÜV approved, long-life and efficient **LED filament lamps suitable for outdoor use.** Metal plate for ballast fixation available as an option (H.BAL.PLT)

Suitable lamps: CFL-LED SON-HQI MAX 70W		E27 lampholder only		.E27
	8 W	1000 Lm	4000 K	.M1L
			2700 K	.M1R
	12 W	1500 Lm	4000 K	.N1L
			2700 K	.N1R

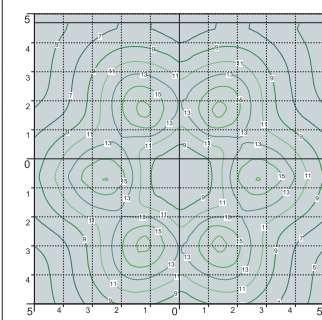
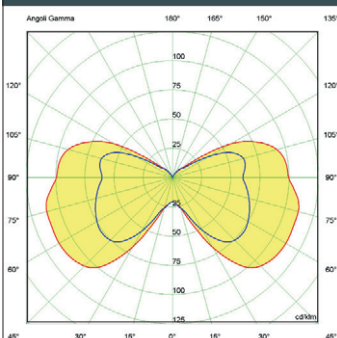
LED LAMPS



More technical details about TÜV approved Fumagalli LED Lamps on page 512.

* ADD THESE SUFFIXES TO THE REFERENCES MENTIONED IN THE CATALOGUE

PHOTOMETRIC DATA SAMPLE



NOEMI lantern clear SON 70W.

POST height 3mt
10 x 10mt area: average 11 lux

The photometric data for all the versions are available upon request or on our website.

COMPANY
BOLLARD
UP&DOWN
BULKHEAD
FLOODLIGHT
IN-GROUND
BRICKLIGHT
GARDEN
URBAN CLASSIC
URBAN MODERN
HIGH-BAY
POST
LAMPS
REFERENCES

NOEMI

LARGE SIZE



E35.157.Q1L



E35.132.Q1L



E35.121



E35.132



E35.113



E35.162





OFIR/NOEMI
E35.132

Pcs 1
Kg 4,6
mc 0,048

EVA/NOEMI
E35.181

Pcs 1
Kg 10,9
mc 0,168

NOEMI
E35.000

Pcs 1
Kg 3,9
mc 0,043

LOT/NOEMI
E35.113

Pcs 1
Kg 4,8
mc 0,061

MIRRA/NOEMI
E35.142

Pcs 1
Kg 9,5
mc 0,083

SICHEM/NOEMI
E35.121

Pcs 1
Kg 4,4
mc 0,048

RICU/NOEMI
E35.157

Pcs 2
Kg 27,8
mc 0,310

GIGI/NOEMI
E35.156

Pcs 2
Kg 26,3
mc 0,278

ARTU'/NOEMI
E35.158

Pcs 2
Kg 23,3
mc 0,247

ALOE'.R/NOEMI
E35.163 resin

Pcs 2
Kg 12,8
mc 0,182

IAFET.R/NOEMI
E35.162 resin

Pcs 2
Kg 13,1
mc 0,153

NEBO/NOEMI

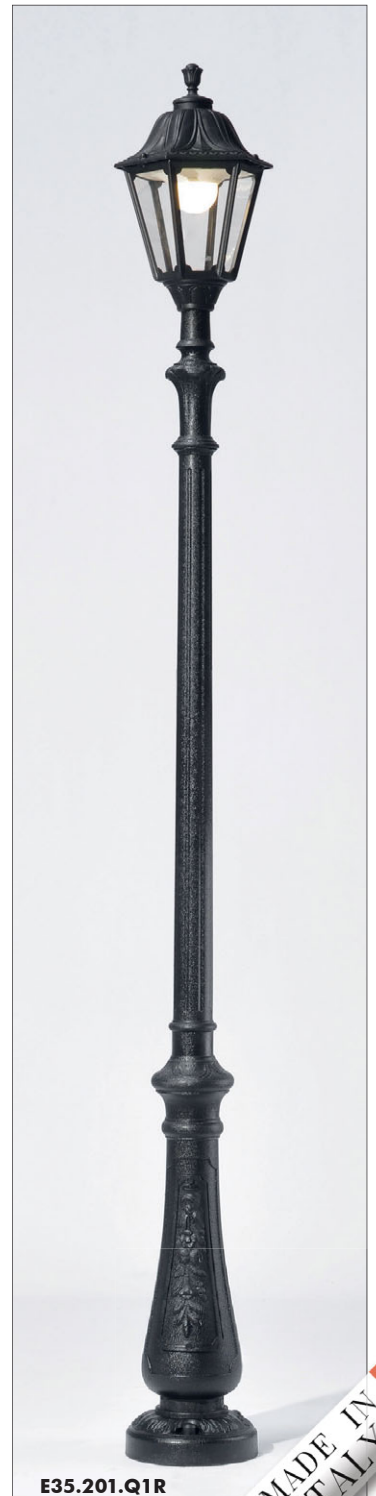
LARGE SIZE



E35.201.R20.Q1L



E35.201.R20



E35.201.Q1R





NEBO OFIR/NOEMI 2L
E35.201.R20

Pcs 1
Kg 31,9
mc 0,268

NEBO OFIR/NOEMI 3L
E35.201.R30

Pcs 1
Kg 35,8
mc 0,342

NEBO/NOEMI
E35.201

Pcs 1
Kg 24,9
mc 0,196

NEBO OFIR/NOEMI 2L
E35.201.R20

Pcs 1
Kg 31,9
mc 0,268

NEBO OFIR/NOEMI 3L
E35.201.R30

Pcs 1
Kg 35,8
mc 0,342

TABOR/NOEMI

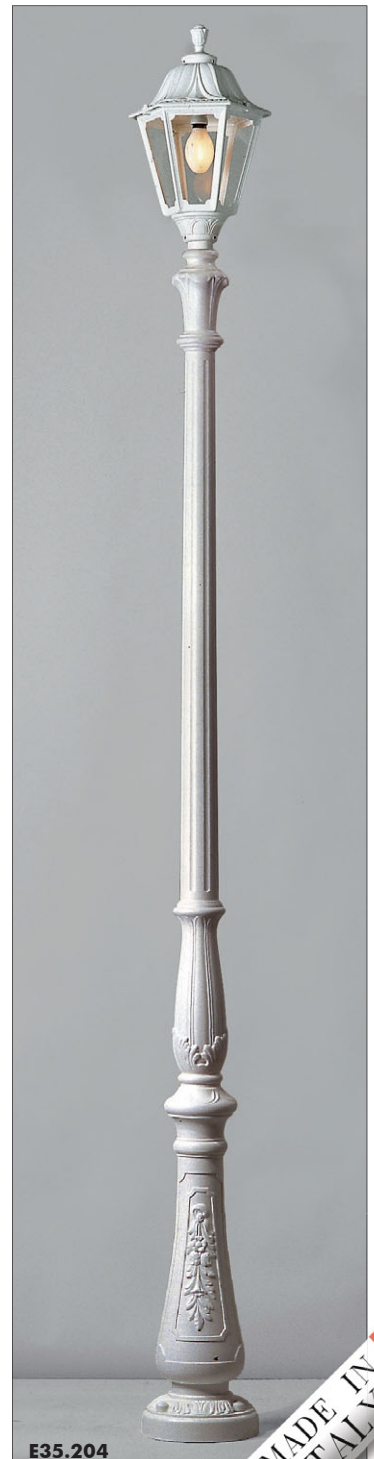
LARGE SIZE



E35.204.R20.Q1L



E35.204.R30



E35.204



MADE IN ITALY



TABOR OFIR/NOEMI 2L
E35.204.R20

Pcs 1
Kg 36,4
mc 0,295

TABOR OFIR/NOEMI 3L
E35.204.R30

Pcs 1
Kg 39,5
mc 0,369

TABOR/NOEMI
E35.204

Pcs 1
Kg 29,4
mc 0,223

Ø 275

TABOR OFIR/NOEMI 2L
E35.204.R20

Pcs 1
Kg 36,4
mc 0,295

Ø 275

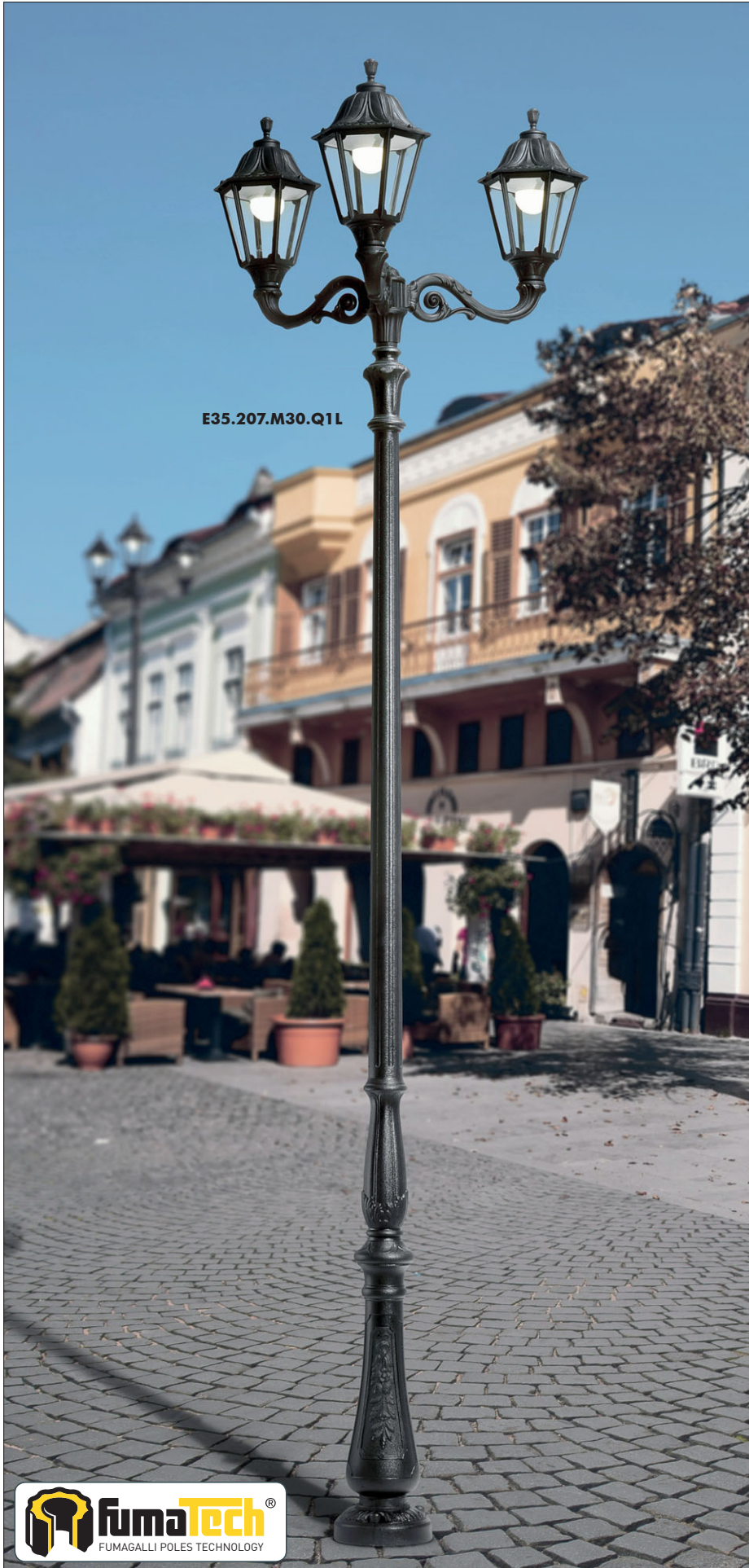
TABOR OFIR/NOEMI 3L
E35.204.R30

Pcs 1
Kg 39,5
mc 0,369

Ø 275

HOREB/NOEMI

LARGE SIZE



E35.207.M30.Q1L



E35.171



E35.207.M21.Q1L





HOREB ADAM/NOEMI 1L
E35.207.M10

Pcs 1
Kg 33,8
mc 0,280

ADAM/NOEMI
E35.171

Pcs 1
Kg 5,3
mc 0,083

HOREB ADAM/NOEMI 3+1
E35.207.M31

Pcs 1
Kg 48
mc 0,476

HOREB/NOEMI
E35.207

Pcs 1
Kg 31,9
mc 0,249

Ø 275

HOREB ADAM/NOEMI 2+1
E35.207.M21

Pcs 1
Kg 43
mc 0,404

Ø 275

HOREB ADAM/NOEMI 3L
E35.207.M30

Pcs 1
Kg 44,1
mc 0,414

HOREB ADAM/NOEMI 2L
E35.207.M20

Pcs 1
Kg 38,8
mc 0,342

COMPANY
BOLLARD
UP&DOWN
BULKHEAD
FLOODLIGHT
IN-GROUND
BRICKLIGHT
GARDEN
URBAN CLASSIC
URBAN MODERN
HIGH-BAY
POST
LAMPS
REFERENCES

KARMEL 3000/NOEMI

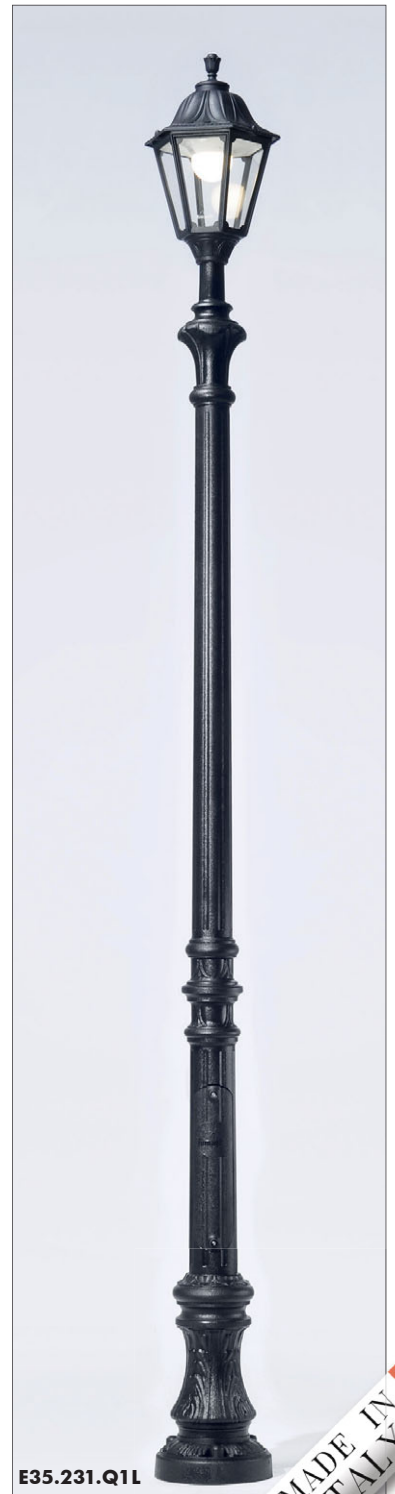
LARGE SIZE



E35.231.R20



E35.231.R30



E35.231.Q1L



MADE IN ITALY



KARMEI 3000 OFIR/NOEMI 2L
E35.231.R20

Pcs 1
Kg 36,4
mc 0,295

KARMEI 3000 OFIR/NOEMI 3L
E35.231.R30

Pcs 1
Kg 39,5
mc 0,369

KARMEI 3000/NOEMI
E35.231

Pcs 1
Kg 29,4
mc 0,223

KARMEI 3000 OFIR/NOEMI 2L
E35.231.R20

Pcs 1
Kg 36,4
mc 0,295

KARMEI 3000 OFIR/NOEMI 3L
E35.231.R30

Pcs 1
Kg 39,5
mc 0,369

COMPANY
BOLLARD
UP&DOWN
BULKHEAD
FLOODLIGHT
IN-GROUND
BRICKLIGHT
GARDEN
URBAN CLASSIC
URBAN MODERN
HIGH-BAY
POST
LAMPS
REFERENCES

KARMEL 3500-4000/NOEMI

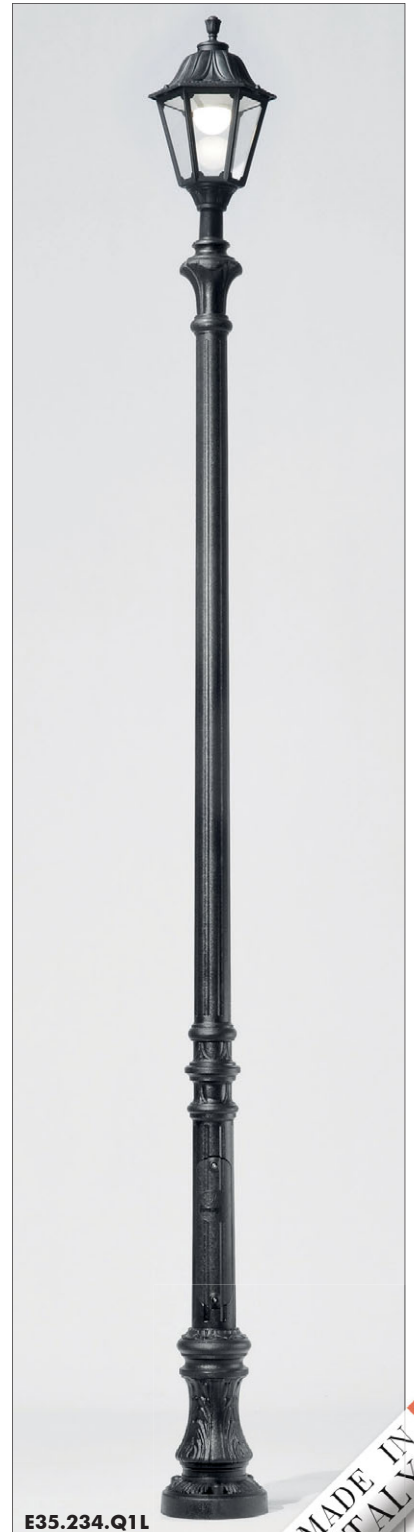
LARGE SIZE



E35.234.M21.Q1L



E35.171



E35.234.Q1L





KARMEL 3500 ADAM/NOEMI 1L	KARMEL 4000 ADAM/NOEMI 1L
E35.234.M10	E35.237.M10
Pcs 1 Kg 33,8 mc 0,280	Pcs 1 Kg 36,3 mc 0,287

KARMEL 3500/NOEMI
E35.234
Pcs 1 Kg 31,9 mc 0,249

KARMEL 3500 ADAM/NOEMI 2+1	KARMEL 4000 ADAM/NOEMI 2+1
E35.234.M21	E35.237.M21
Pcs 1 Kg 43 mc 0,404	Pcs 1 Kg 45,5 mc 0,431

KARMEL 3500 ADAM/NOEMI 3L	KARMEL 4000 ADAM/NOEMI 3L
E35.234.M30	E35.237.M30
Pcs 1 Kg 44,1 mc 0,414	Pcs 1 Kg 46,6 mc 0,441

KARMEL 3500 ADAM/NOEMI 3+1	KARMEL 4000 ADAM/NOEMI 3+1
E35.234.M31	E35.237.M31
Pcs 1 Kg 48 mc 0,476	Pcs 1 Kg 50,5 mc 0,503

KARMEL 3500 ADAM/NOEMI 2L	KARMEL 4000 ADAM/NOEMI 2L
E35.234.M20	E35.237.M20
Pcs 1 Kg 38,8 mc 0,342	Pcs 1 Kg 41,3 mc 0,369